



**Steven Plint**  
079 732 4564  
steven@realandproper.co.za



**Gail Mortimer**  
082 551 8196

gail@realandproper.co.za



**Gerhard Le Grange**  
0646518386

gerhard@realandproper.co.za

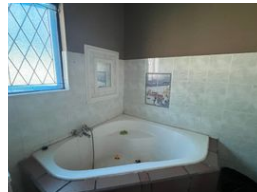
Contact Head Office

039 9407325

No 1 Bank Street (Corner Bank Street and Marine Drive)  
Margate  
KwaZulu Natal



Web Ref RL1661



**R700,000**

3 2 2

**Monthly Bond Repayment** R7,106.60  
Calculated over 20 years at 10.75% with no deposit.

**Transfer Costs** R23,730.00      **Bond Costs** R17,680.00

These calculations are only a guide. Please ask your conveyancer for exact calculations.

**Monthly Rates** R980

"Diamond in the Rough: Renovation Opportunity in Palm Beach"

PRICE REDUCTION ON 28 AUGUST 2024

Exclusive Authority To Sell!!!!!!!

New Listing: 17 July 2024 - No Transfer Duty

If you're seeking a rewarding fixer-upper renovation project, you've found the ideal opportunity. This charming home, brimming with potential, awaits your creative touch to restore it to its former splendor.

Nestled in a peaceful area of Palm Beach, just off the main marine road, this property features a spacious layout with possibilities galore. The main structure offers 3 bedrooms, or optionally 2 bedrooms plus a study or dining room. The open-plan lounge and kitchen flow seamlessly, complemented by a delightful long patio stretching the length of the house. The main bedroom boasts an en-suite bathroom, with an additional guest bathroom for convenience.

Enhancing its appeal, you'll find a double garage...

## Features

**Pets Allowed** Yes

### Interior

Bedrooms	3
Bathrooms	2
Kitchens	1
Recep. Rooms	1
Furnished	No

### Exterior

Garages	2
Carports / Parkings	4
Security	No
Pool	Yes
Views	False

### Sizes

Land Size	1,360m²
-----------	---------

